

# UNIVERSAL MACHINE RAISING TOOL FOR LIFTS MP Flex

## CONTENT

<b>1</b>	<b>UNIVERSAL TOOL FOR LIFTS MP Flex 410 – MP Flex 450</b>	<b>4</b>
1.1	Changing the hardware on the bedframe	4
1.2	Fixing the universal tool to the guide rail	5
1.3	Fixing the universal tool to the tube	7
1.4	Checking the assembly via the welded levelling basis	9
1.5	Assembling the machine raising plate	10
<b>2</b>	<b>UNIVERSAL TOOL FOR LIFTS MP Flex XL – MP Flex mini</b>	<b>11</b>
2.1	Changing the hardware on the bedframe	11
2.2	Fixing the universal tool to the guide rail	12
2.3	Fixing the universal tool to the tube	14
2.4	Checking the assembly via the welded levelling basis	16
2.5	Assembling the machine raising plate	17



*Tornillería incluida con cada elemento*

*Hardware included with every element*

*Visserie incluse avec chaque élément*

*Schraubenmaterial mit jedem Element enthalten*



**YOUR LIFE IS THE MOST IMPORTANT THING.**

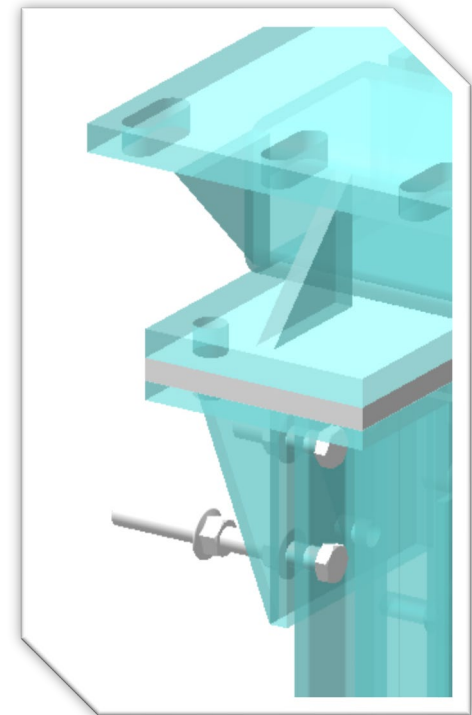
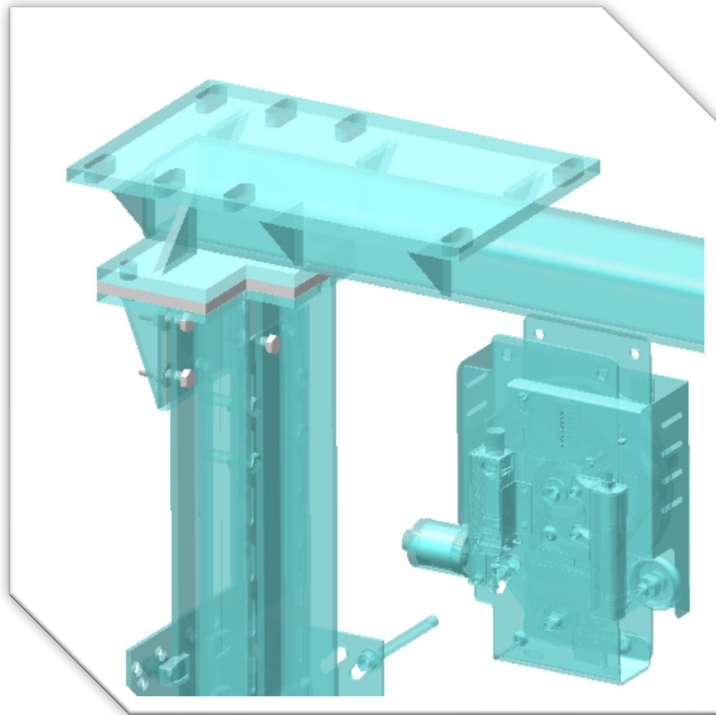
**DO NOT FORGET TO OBSERVE THE SAFETY RULES AT ALL TIMES.**

# 1 UNIVERSAL TOOL FOR LIFTS MP Flex 410 – MP Flex 450

## 1.1 Changing the hardware on the bedframe

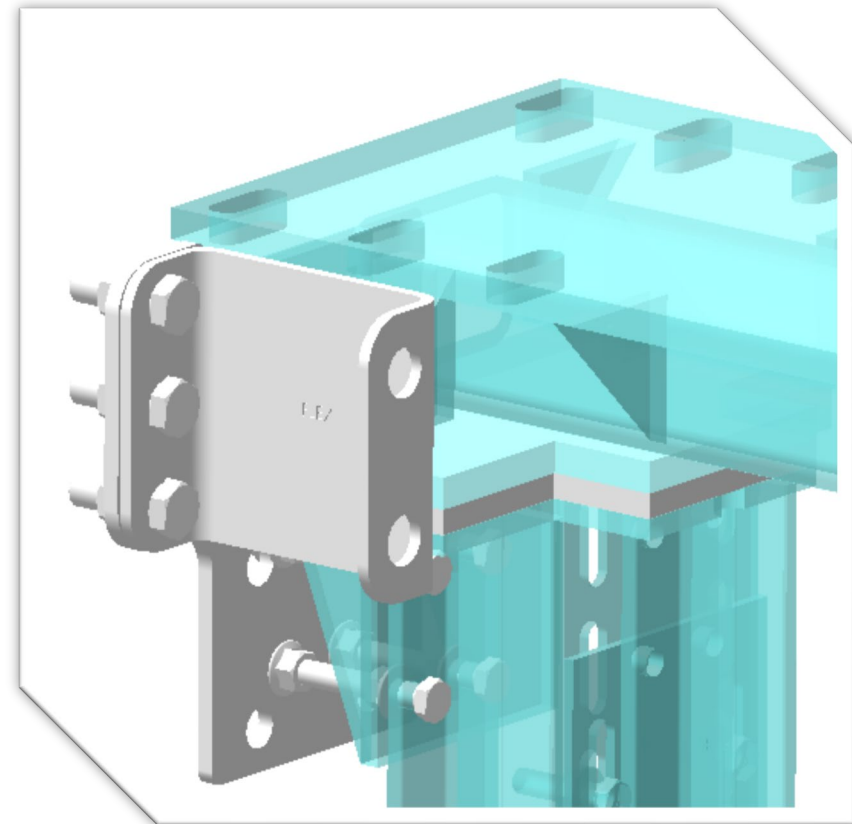
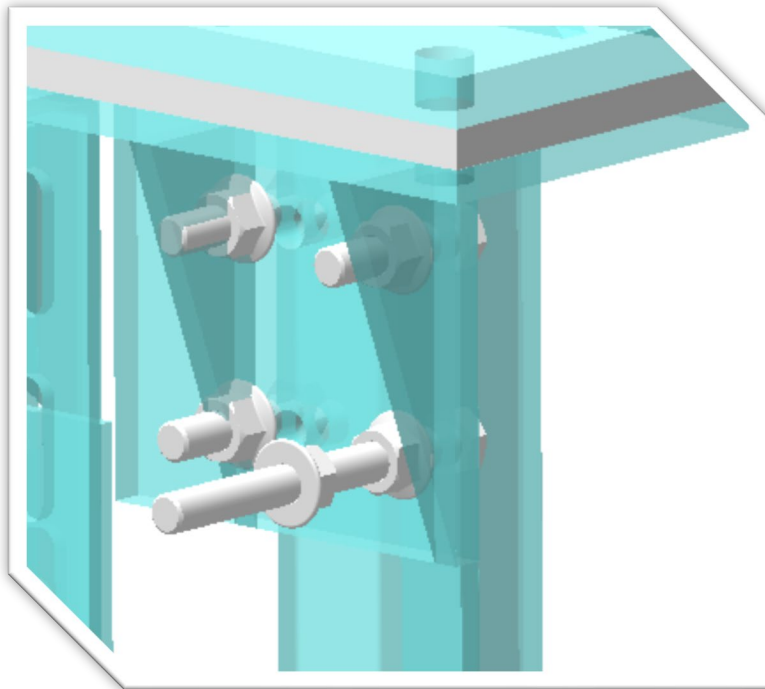
Replace one by one, the standard hardware fixing the bedframe by those screws supplied with the tool:

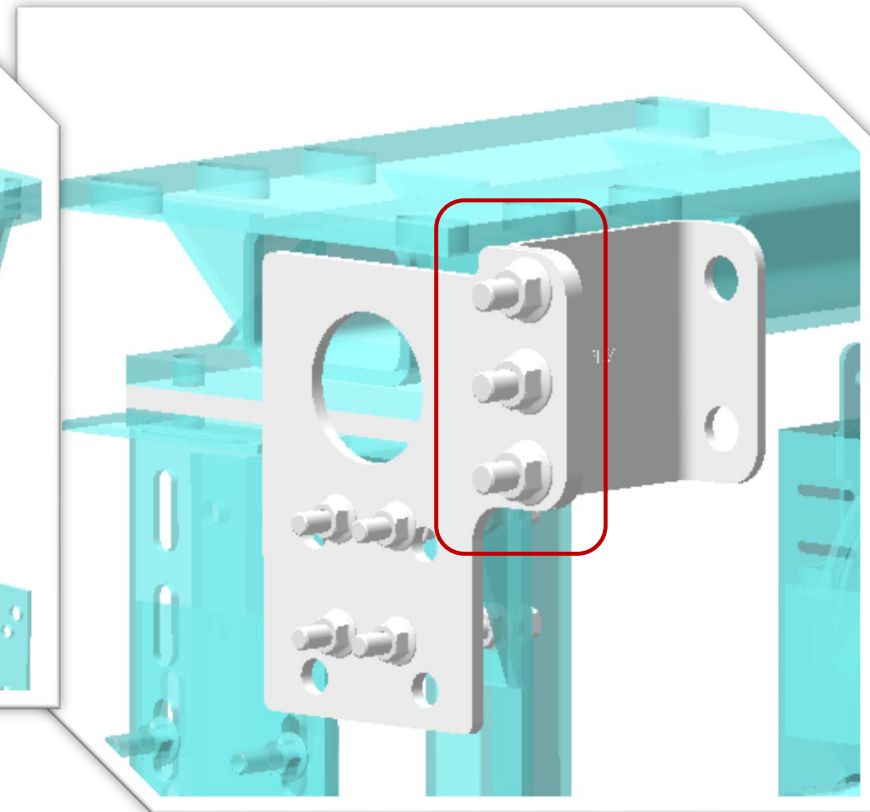
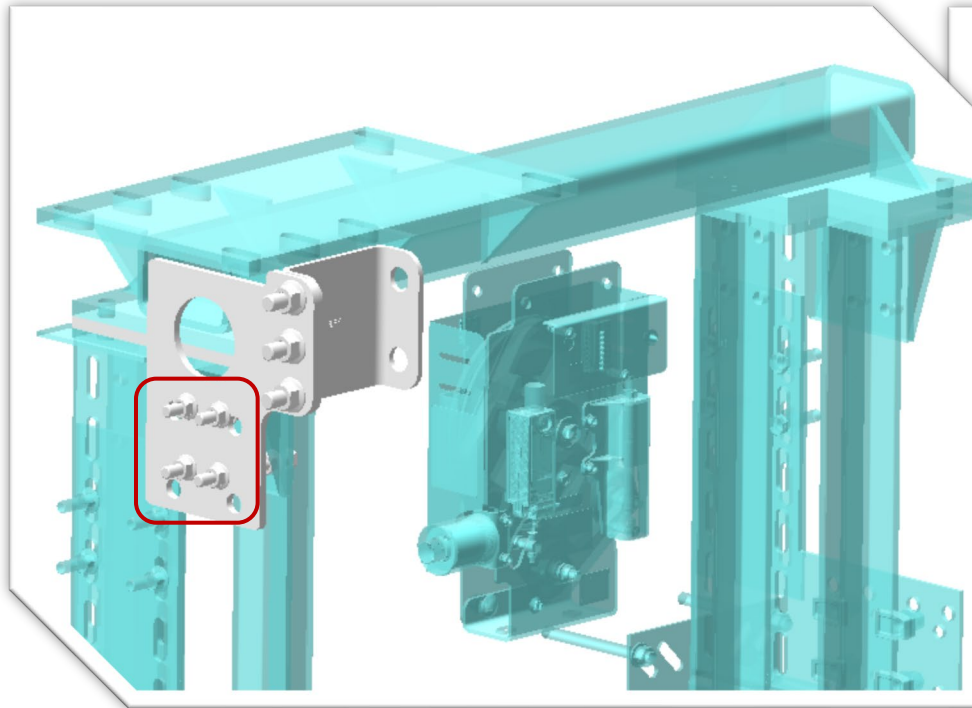
- If it is a T70/70/9 car guide rail, they will be replaced by the screw DIN 933 M12x120
- If it is a T120/76/9 car guide rail, they will be replaced by the screw DIN 933 M16x120



## 1.2 Fixing the universal tool to the guide rail

After the nuts are placed as shown in the picture, the tool shall be screwed onto the guide rail.  
It is essential to ensure that the nuts are tightened.





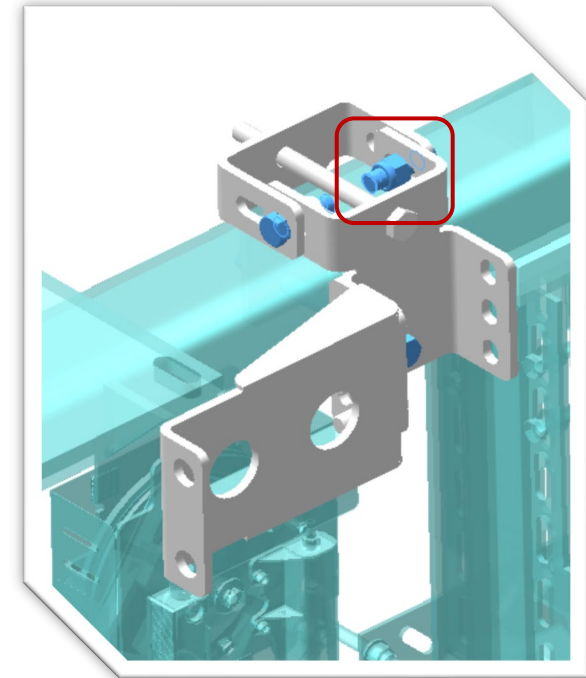
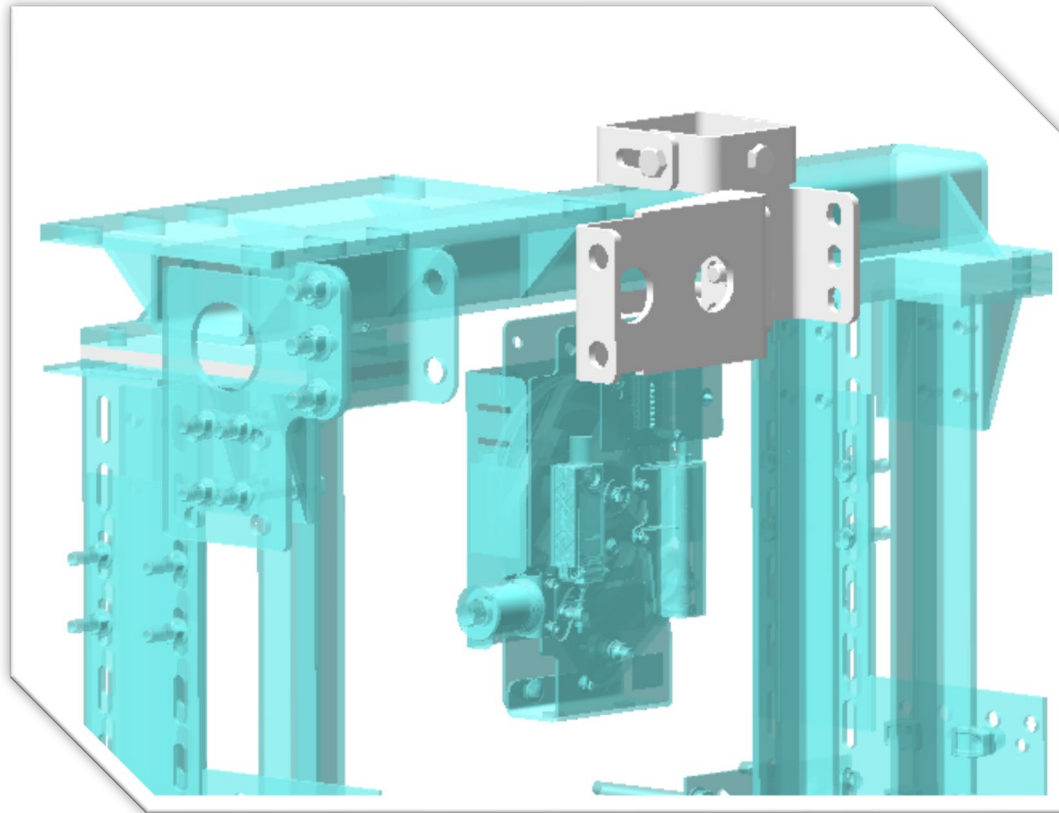
Pieces	DESCRIPTION	GUIDE RAIL MODEL	
		T70/70/9	T120/76/9
4	Screw DIN 933 M12x120	✓	X
4	Screw DIN 933 M16x120	X	✓
12	Nut DIN 6923 M12	✓	X
12	Nut DIN 6923 M16	X	✓

Pieces	DESCRIPTION
3	Screw DIN 933 M16x50
3	Nut DIN 6923 M16

Do not tighten these screws until proper assembly of all tool components has been ensured.

## 1.3 Fixing the universal tool to the tube

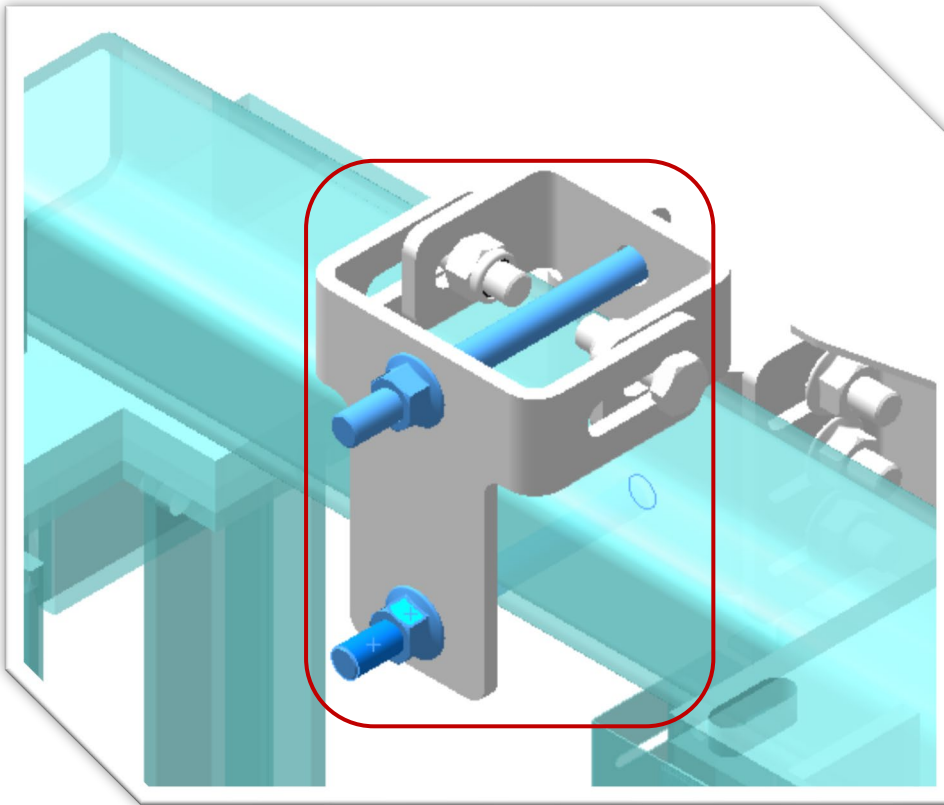
The tightening of the DIN 985 nuts must allow the universal tool to move to adapt to other tube sizes.



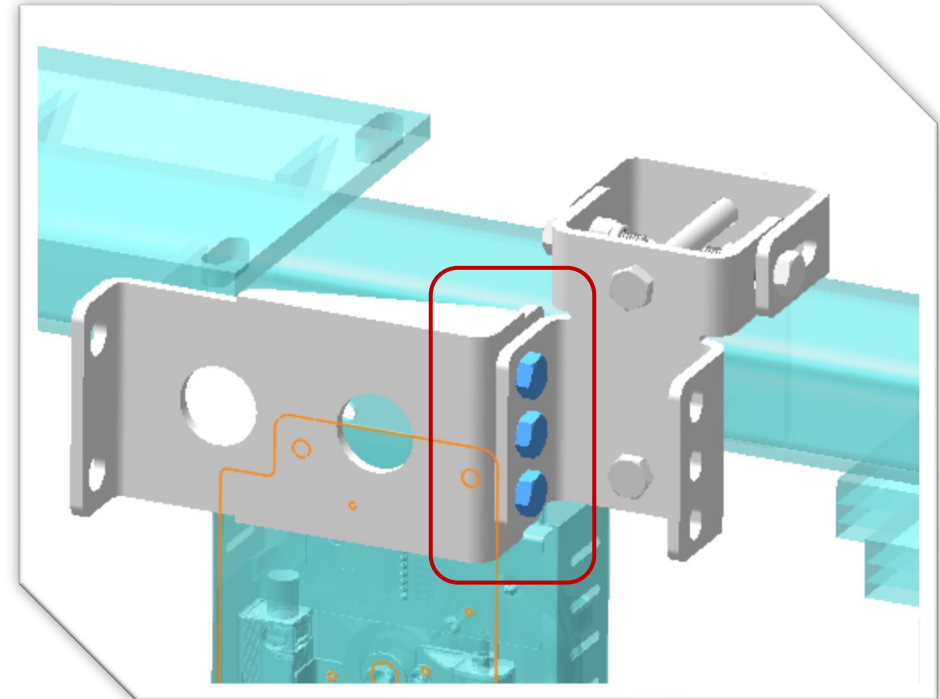
Pieces	DESCRIPTION
2	Screw DIN 933 M16x50
2	Nut DIN 985 M16



The nut DIN 6923 M16 shall be tightened, in such a way the tool is fixed to the tube.



Pieces	DESCRIPTION
2	Screw DIN 933 M16x180
2	Nut DIN 6923 M16



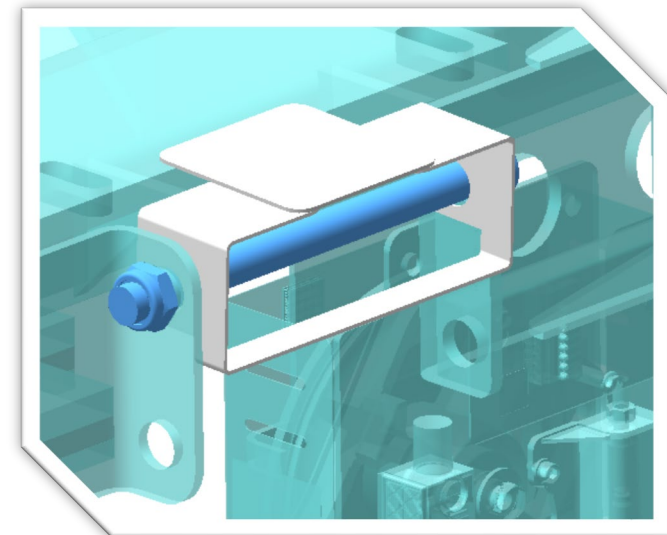
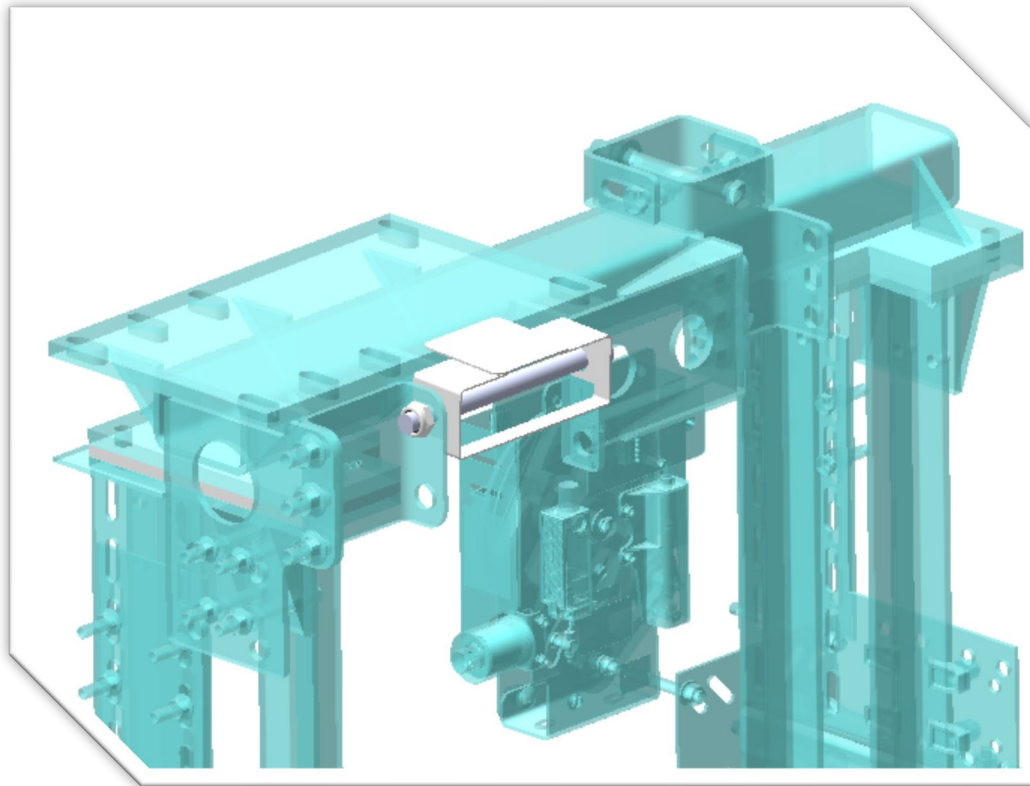
Pieces	DESCRIPTION
3	Screw DIN 933 M16x50
3	Nut DIN 6923 M16

Do not tighten these screws until proper assembly of all tool components has been ensured.



## 1.4 Checking the assembly via the welded levelling basis

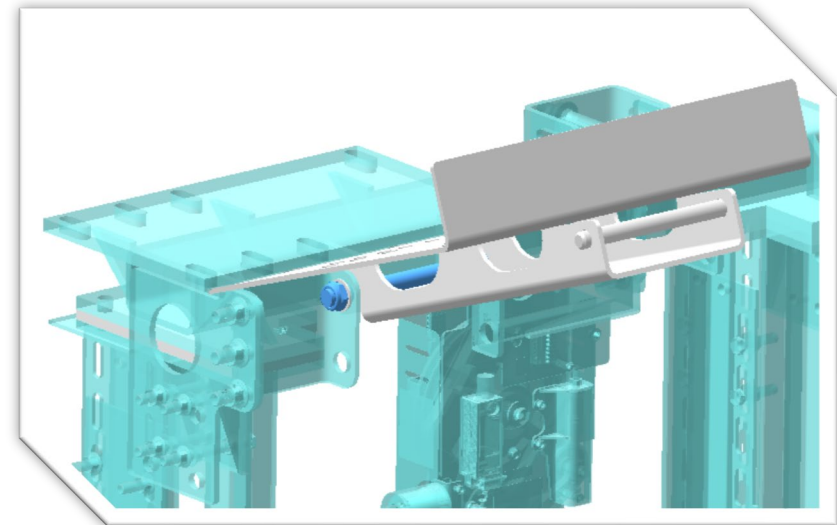
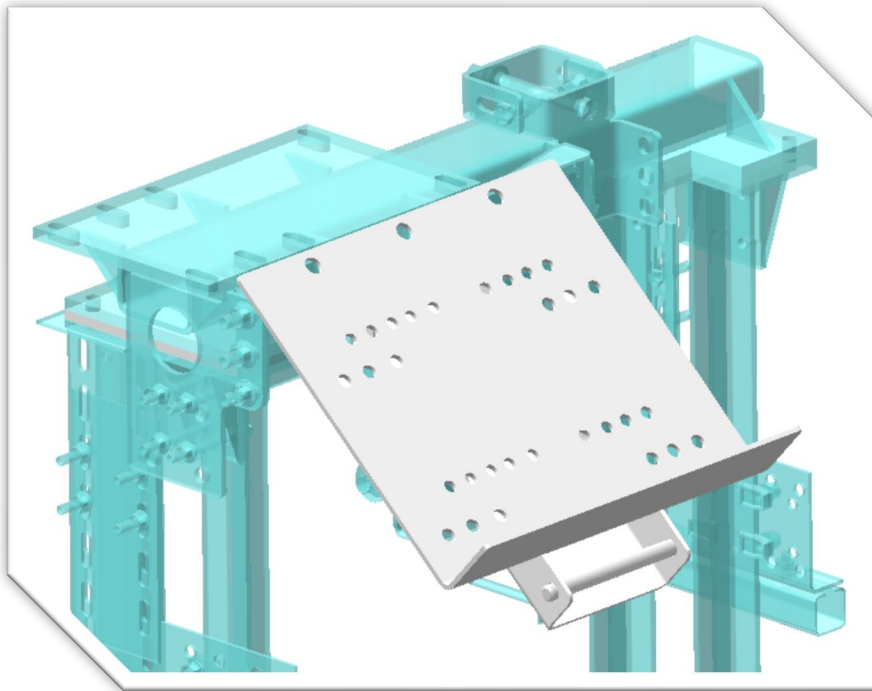
The tool components must be checked to ensure they are properly fitted. To do this, use the welded levelling base, which ensures correct positioning by resting the flap on the bedframe plate. Use the DIN 912 M20x240 screw supplied with the folding tray as an articulated axis.



Pieces	DESCRIPTION
1	Screw DIN 912 M20x240
1	Nut DIN 985 M20
1	Washer DIN 125 Ø20

## 1.5 Assembling the machine raising plate

When the articulation points have been obtained, the welded levelling base is removed and the machine is either raised or lowered, depending on the assembly or maintenance operation being carried out.



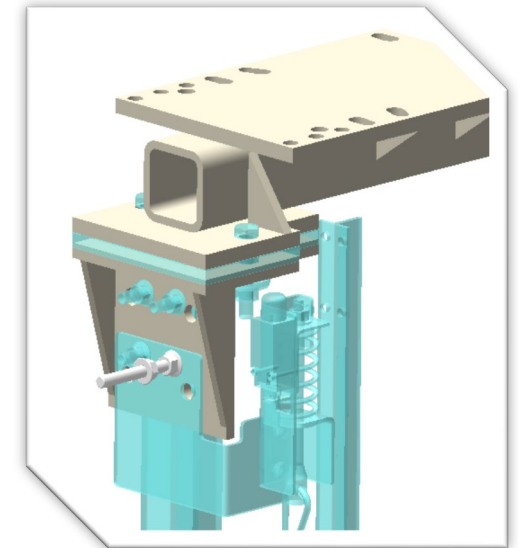
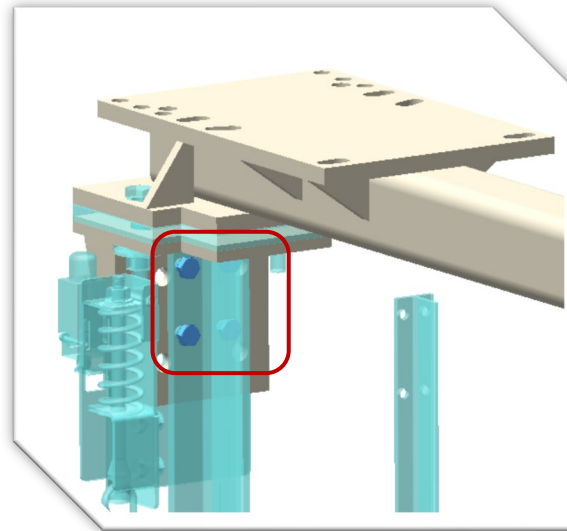
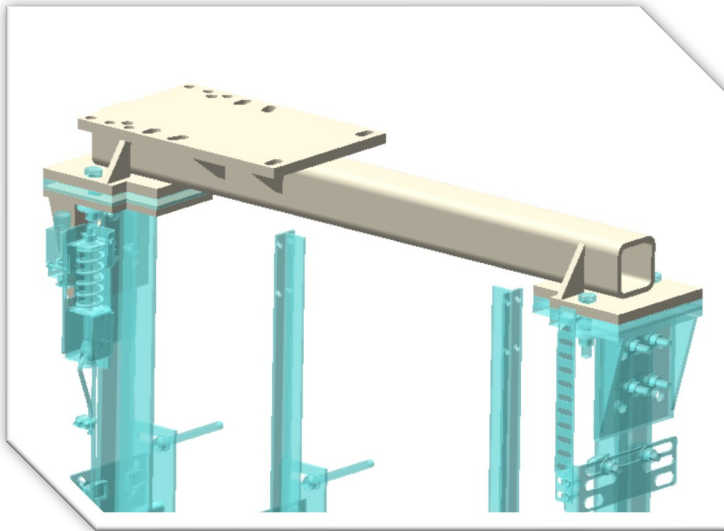
Pieces	DESCRIPTION
1	Screw DIN 912 M20x240
1	Nut DIN 985 M20
1	Washer DIN 125 Ø20

## 2 UNIVERSAL TOOL FOR LIFTS MP Flex XL – MP Flex mini

### 2.1 Changing the hardware on the bedframe

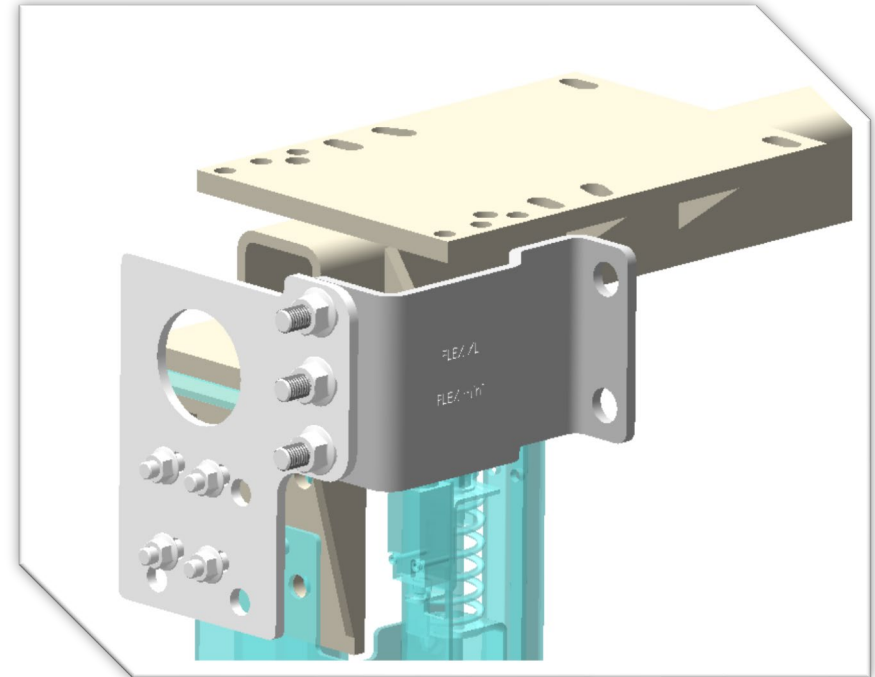
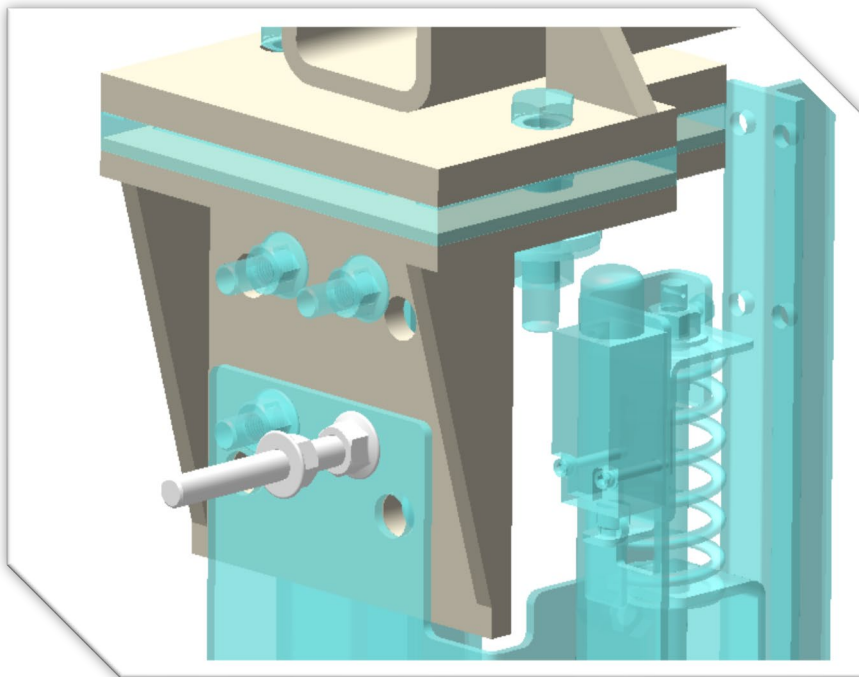
Replace one by one, the standard hardware fixing the bedframe by those screws supplied with the tool:

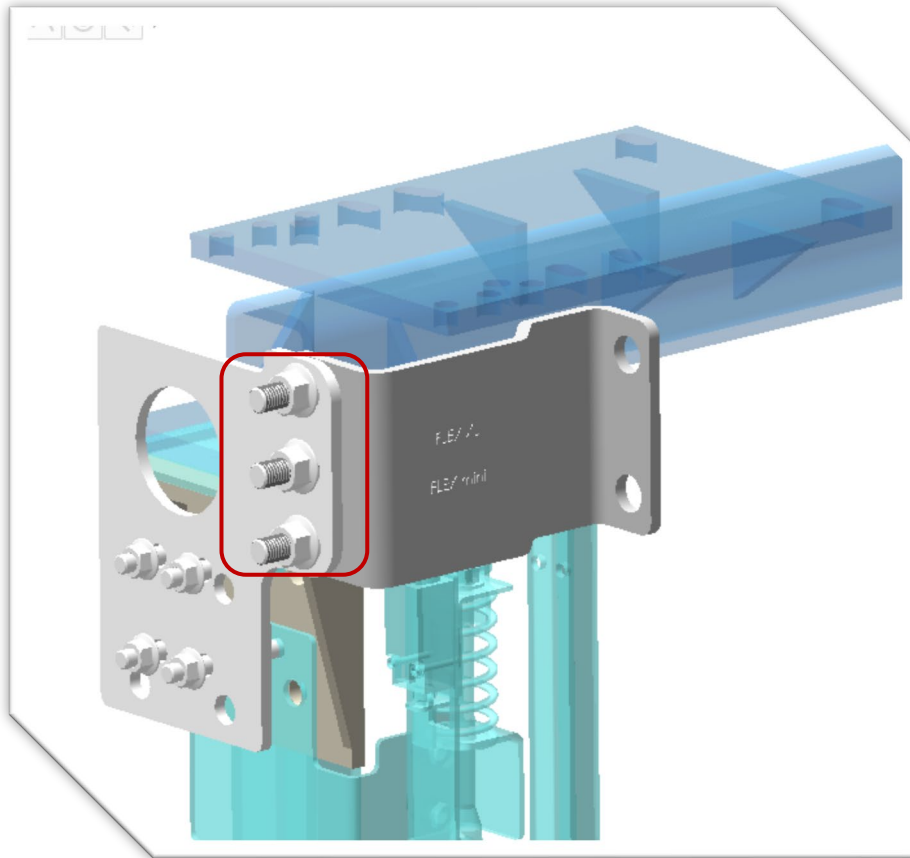
- If it is a T70/70/9 car guide rail, they will be replaced by the screw DIN 933 M12x120
- If it is a T120/76/9 car guide rail, they will be replaced by the screw DIN 933 M16x120



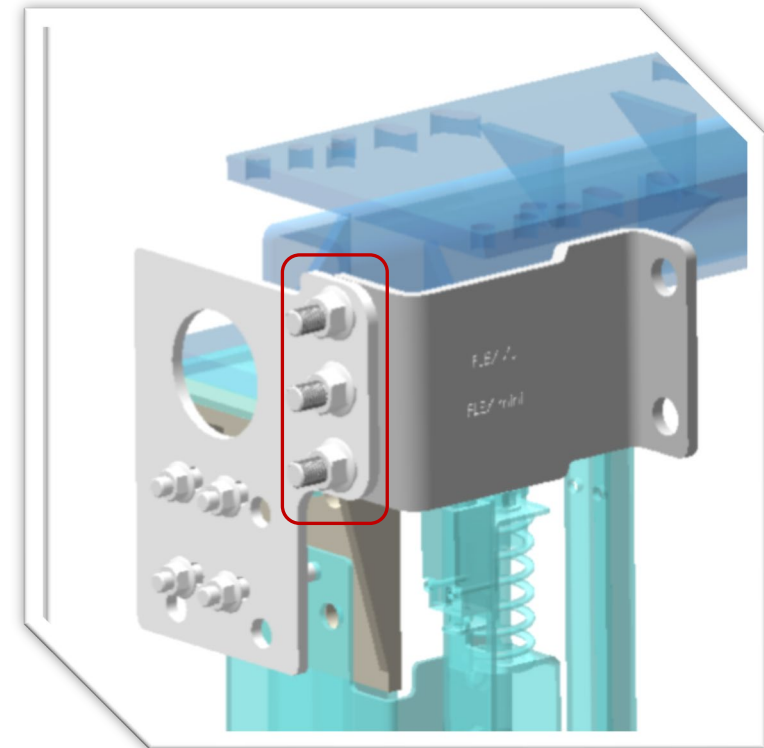
## 2.2 Fixing the universal tool to the guide rail

After the nuts are placed as shown in the picture, the tool shall be screwed onto the guide rail. It is essential to ensure that the nuts are tightened.





Pieces	DESCRIPTION	GUIDE RAIL MODEL	
		T70/70/9	T120/76/9
4	Screw DIN 933 M12x120	✓	X
4	Screw DIN 933 M16x120	X	✓
12	Nut DIN 6923 M12	✓	X
12	Nut DIN 6923 M16	X	✓

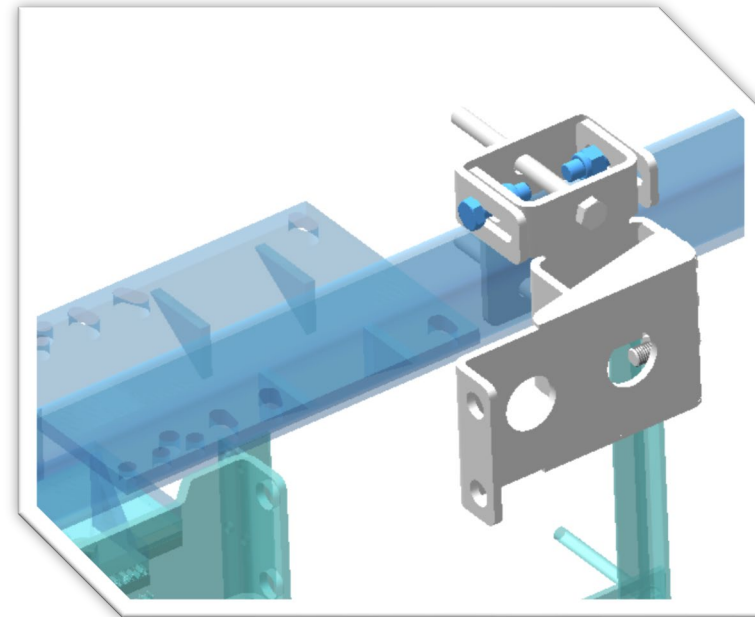
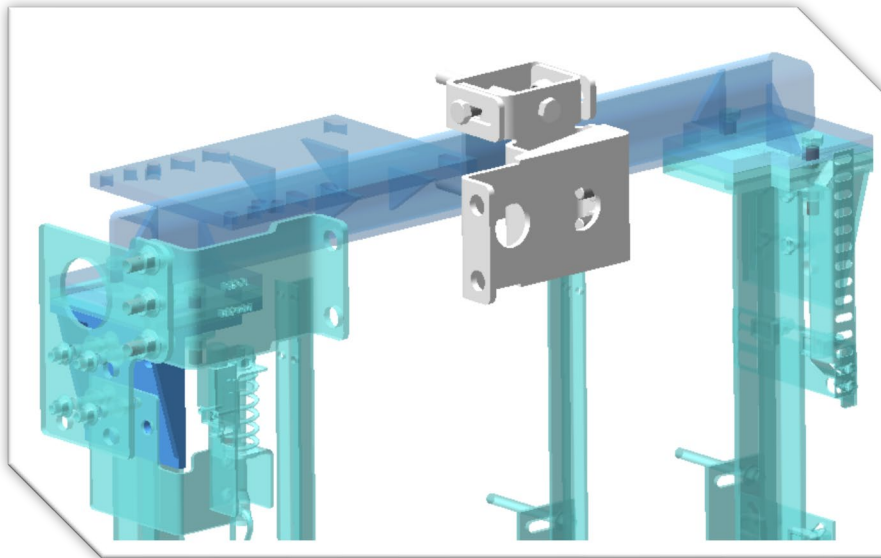


Pieces	DESCRIPTION
3	Screw DIN 933 M16x50
3	Nut DIN 6923 M16

Do not tighten these screws until proper assembly of all tool components has been ensured.

## 2.3 Fixing the universal tool to the tube

The tightening of the DIN 985 nuts must allow the universal tool to move to adapt to other tube sizes.

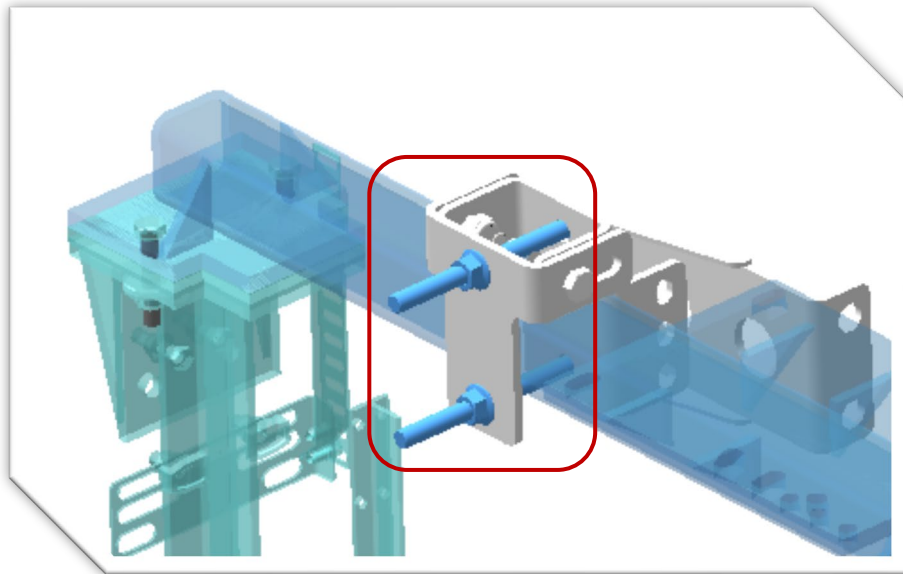


Pieces	DESCRIPTION
2	Screw DIN 933 M16x50
2	Nut DIN 985 M16

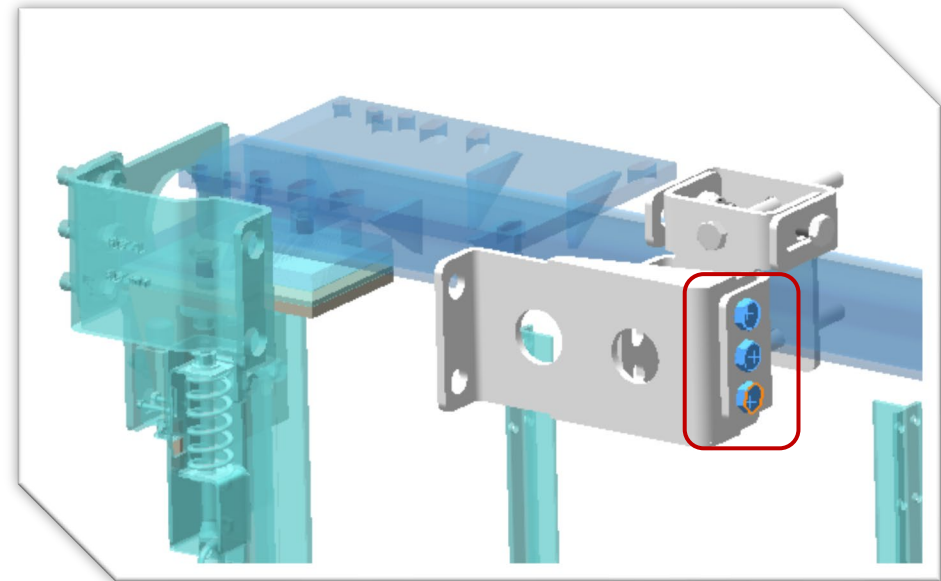
Do not tighten these screws until proper assembly of all tool components has been ensured.



The nut DIN 6923 M16 shall be tightened, in such a way the tool is fixed to the tube.



Pieces	DESCRIPTION
2	Screw DIN 933 M16x180
2	Nut DIN 6923 M16



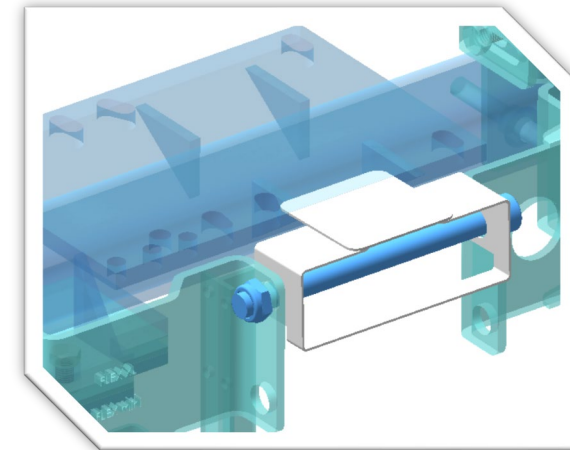
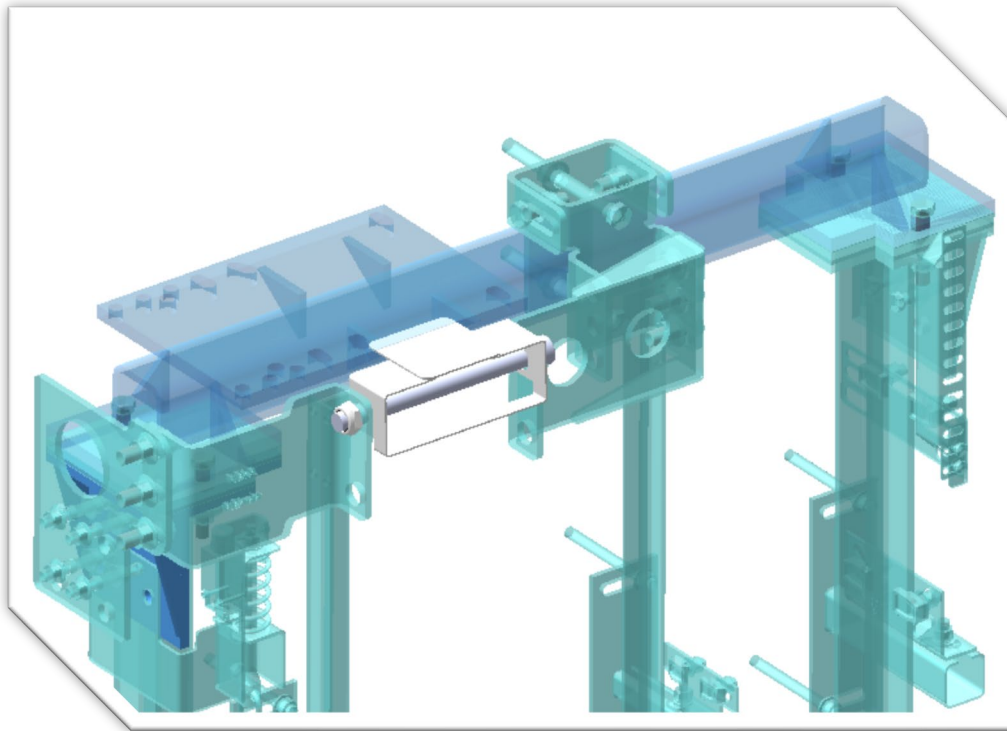
Pieces	DESCRIPTION
3	Screw DIN 933 M16x50
3	Nut DIN 6923 M16

Do not tighten these screws until proper assembly of all tool components has been ensured.



## 2.4 Checking the assembly via the welded levelling basis

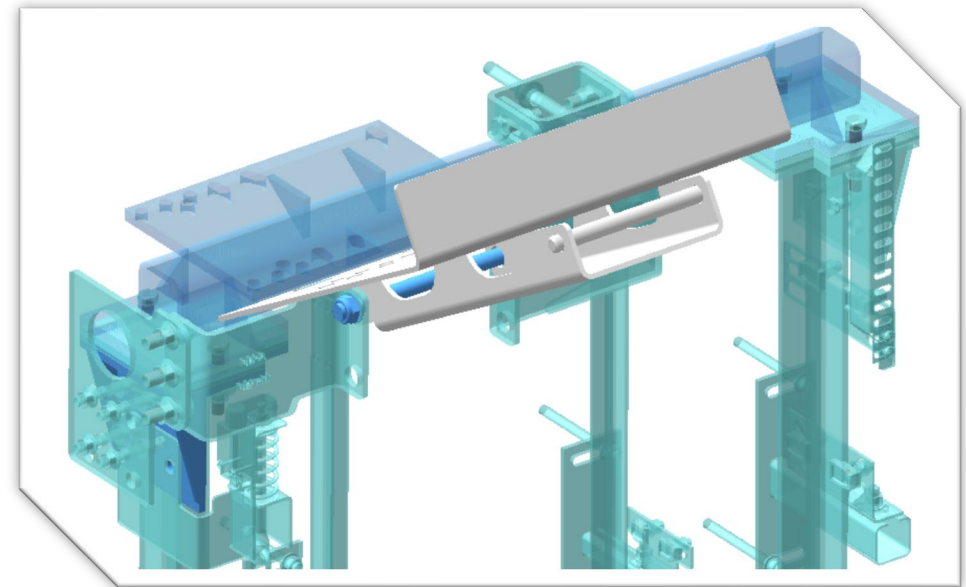
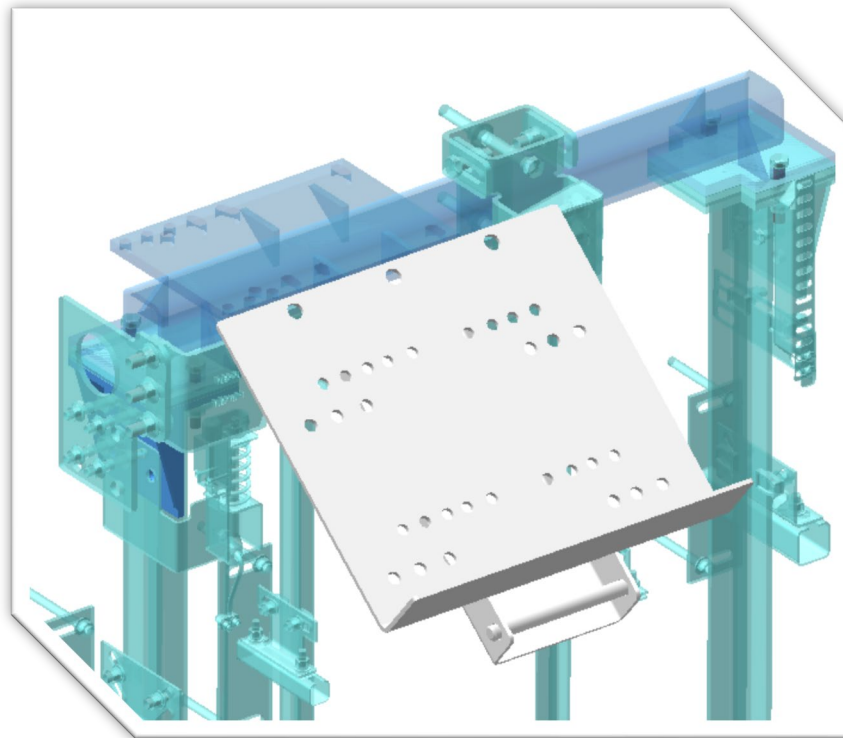
The tool components must be checked to ensure they are properly fitted. To do this, use the welded levelling base, which ensures correct positioning by resting the flap on the bedframe plate. Use the DIN 912 M20x240 screw supplied with the folding tray as an articulated axis.



Pieces	DESCRIPTION
1	Screw DIN 912 M20x240
1	Nut DIN 985 M20
1	Washer DIN 125 Ø20

## 2.5 Assembling the machine raising plate

When the articulation points have been obtained, the welded levelling base is removed and the machine is either raised or lowered, depending on the assembly or maintenance operation being carried out.



Pieces	DESCRIPTION
1	Screw DIN 912 M20x240
1	Nut DIN 985 M20
1	Washer DIN 125 Ø20



#### HEADQUARTERS

📍 Pabellón MP  
Leonardo Da Vinci, 15  
Isla de la Cartuja – 41092 Seville  
SPAIN

☎ +34 902 197 277  
@ elevacion@mpascensores.com

the  
**smart**  
**CHOi)E**

Technical Manual translated from the original in Spanish, available at MP website.  
Products constantly developed, the specifications can be modified without prior notice.

**mp** moving people

 [www.mplifts.com](http://www.mplifts.com)